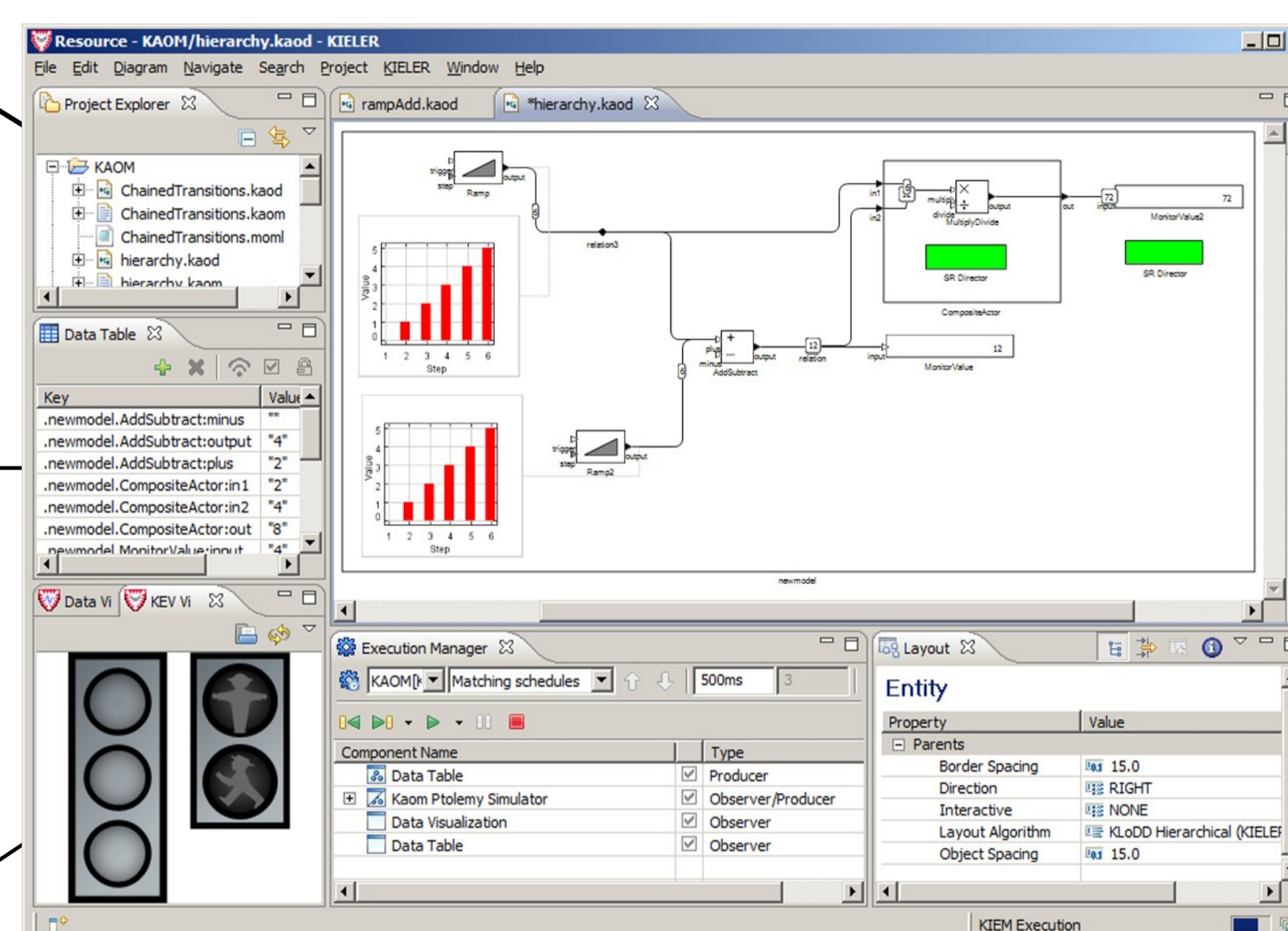
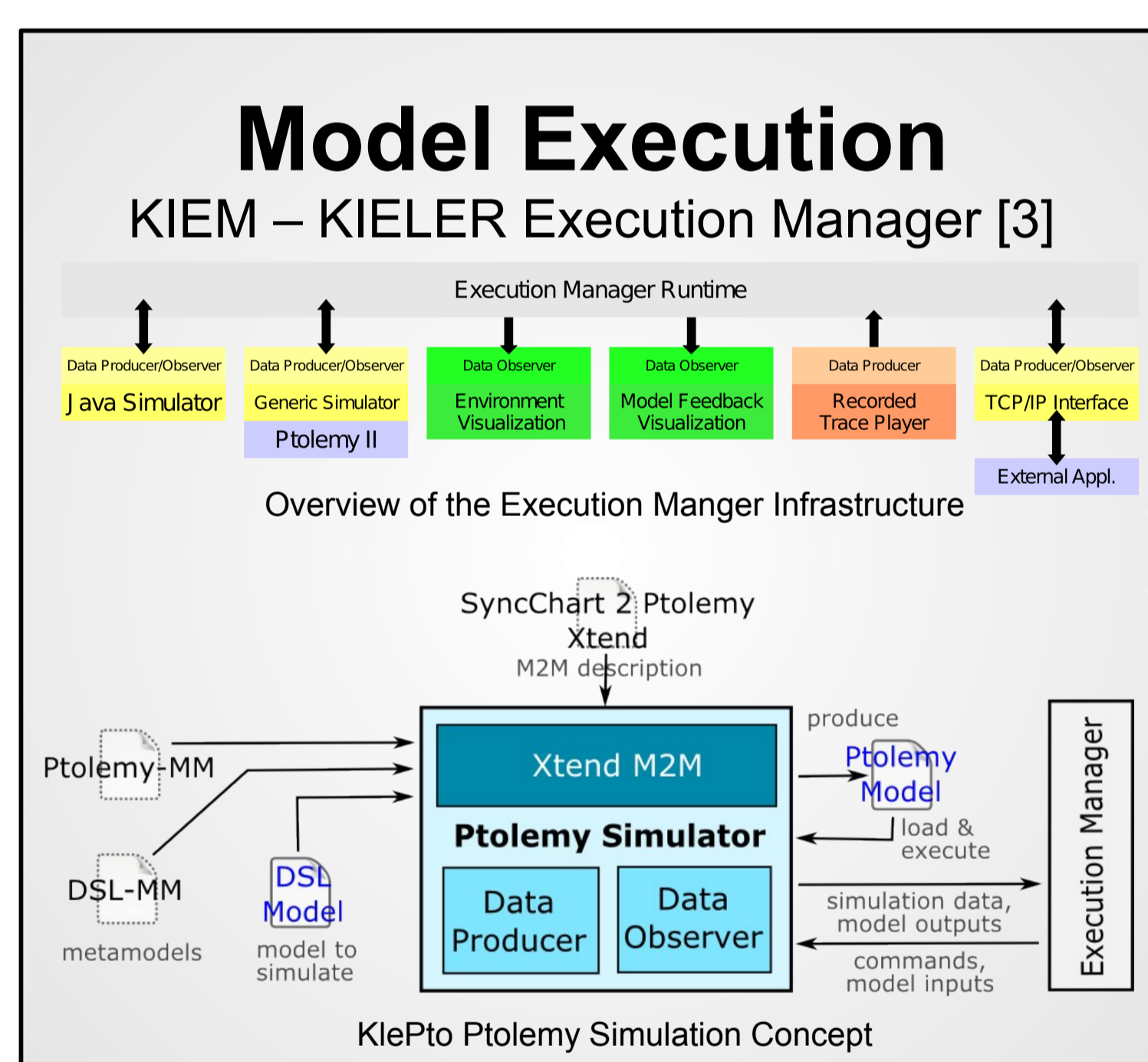
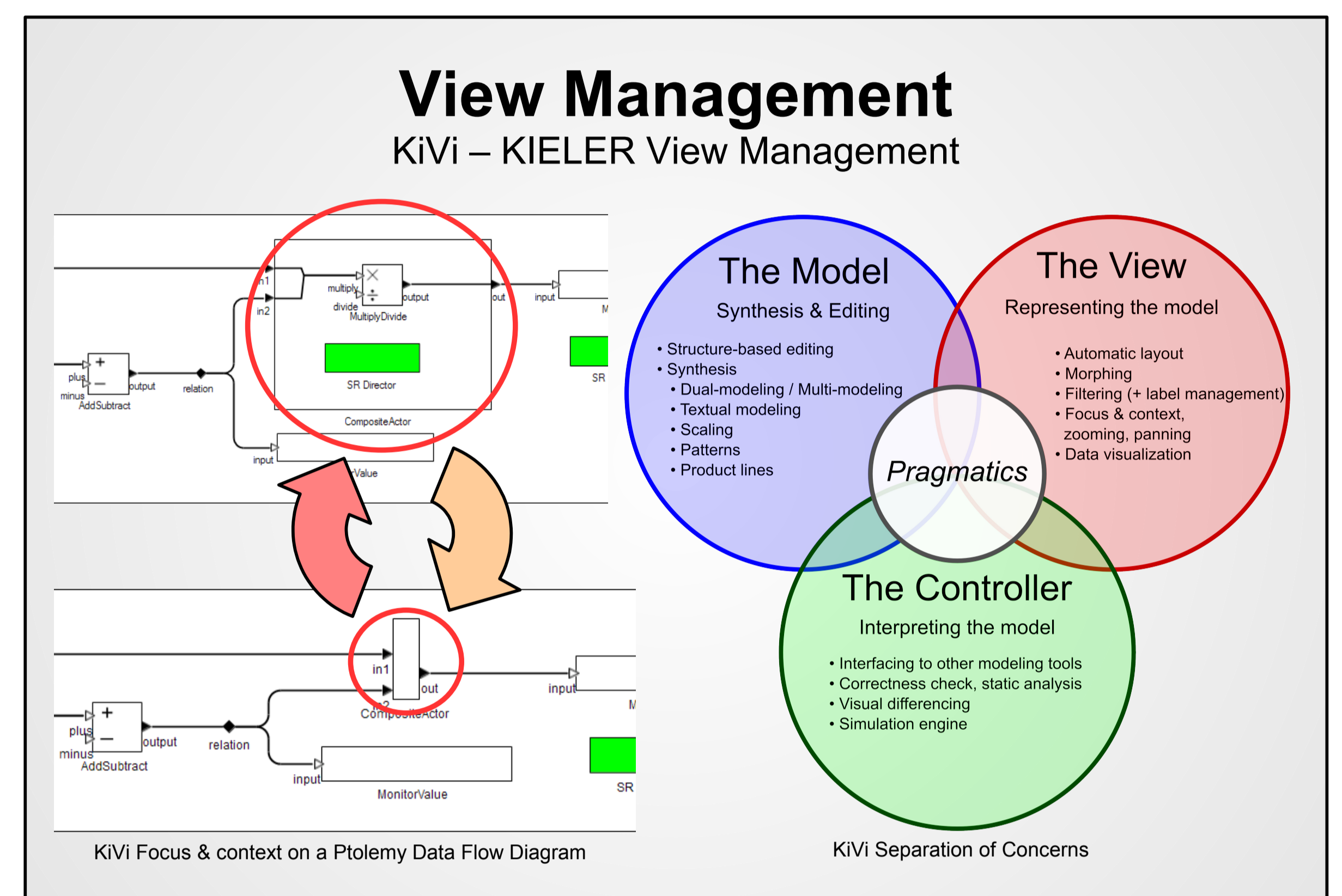
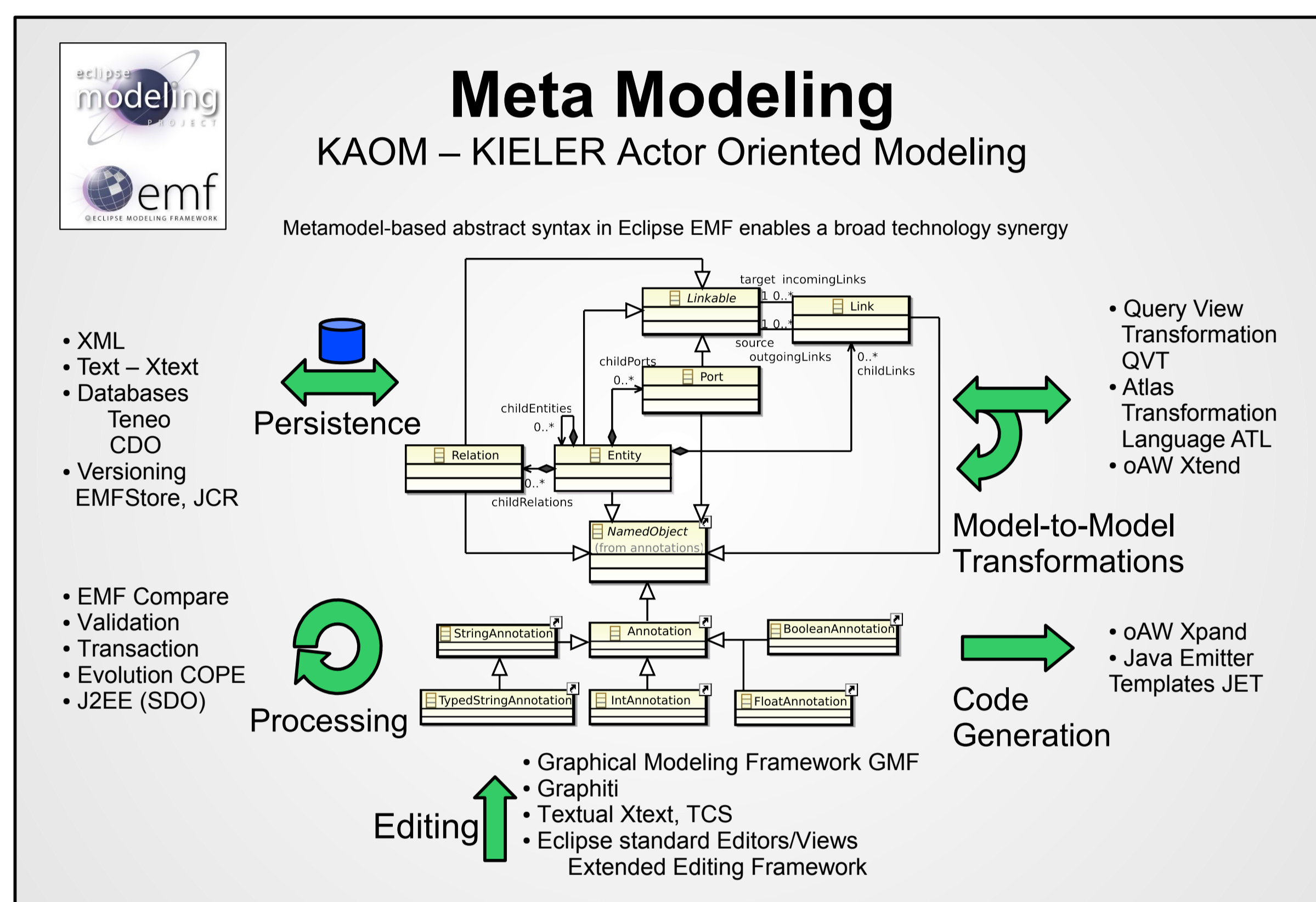
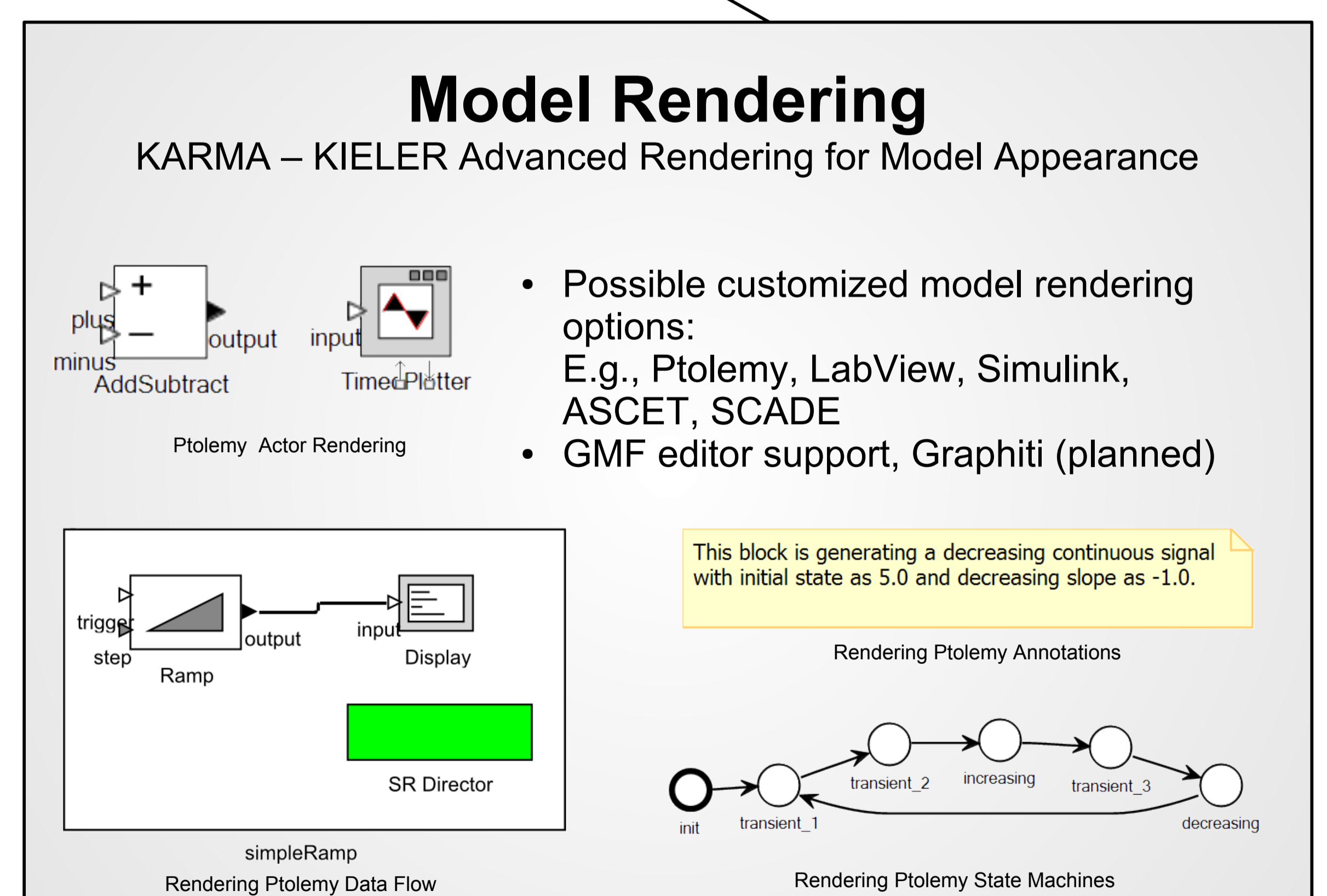
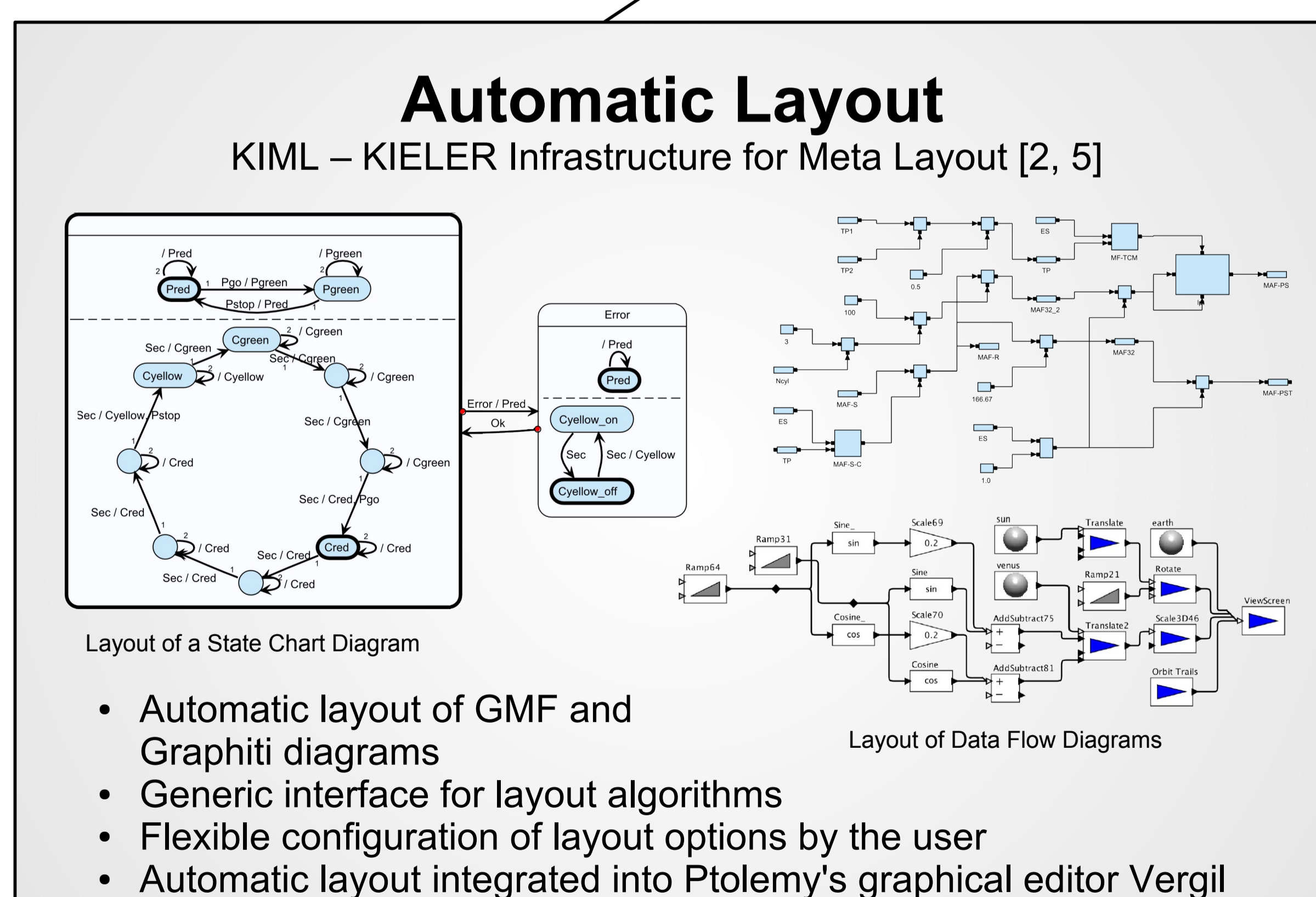
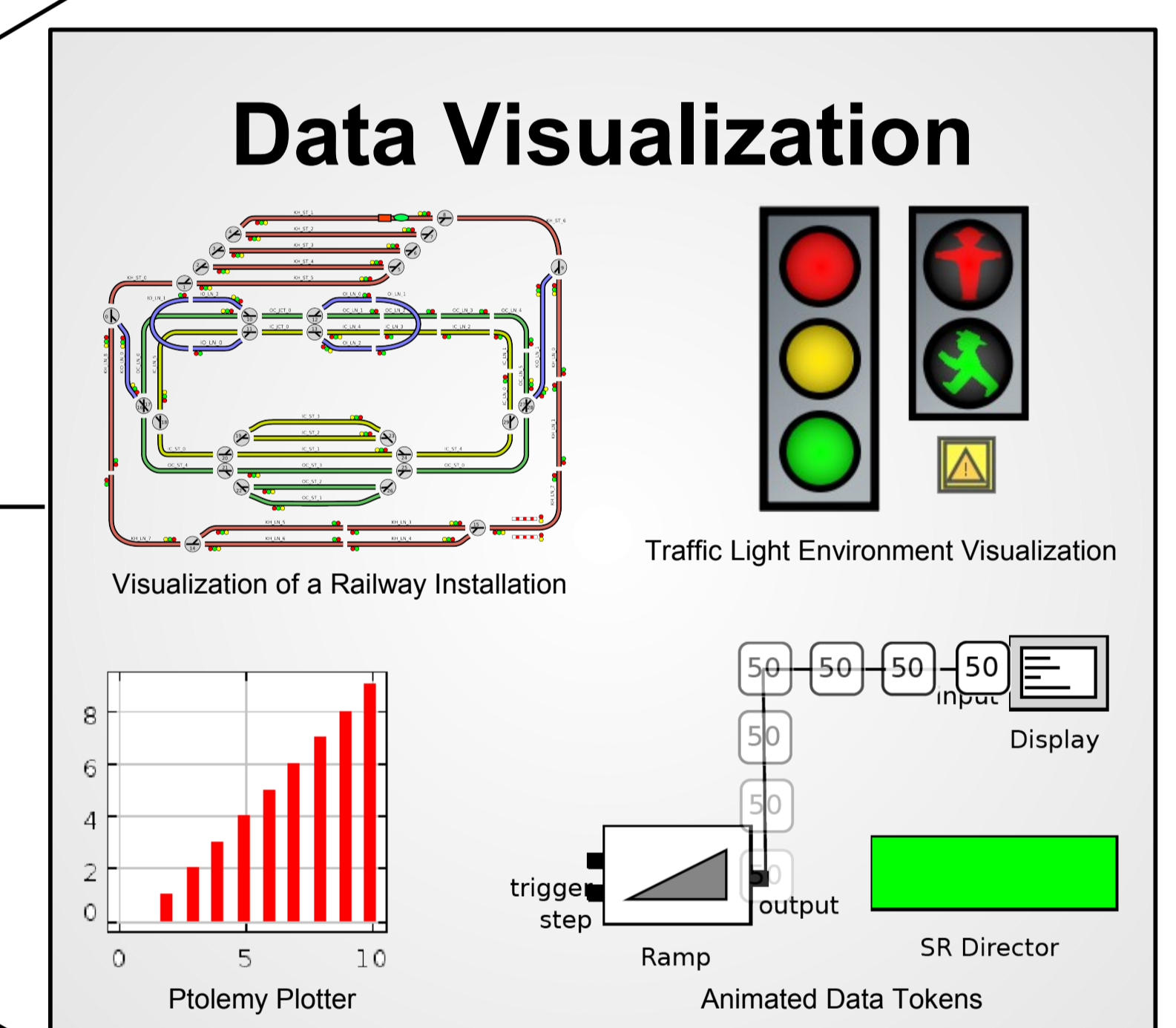


# KIELER Actor Oriented Modeling

Kiel Integrated Environment for Layout  
Eclipse Rich Client



KAOM with Automatic Layout, Ptolemy rendering and Simulation in KIELER



**Contact Persons:**  
Miro Spönemann / Christian Motika  
Department of Computer Science  
Christian-Albrechts-Universität zu Kiel  
Olshausenstr. 40, 24098 Kiel, Germany  
Phone: +49 (0) 431 880-7282 /-7526  
Fax: +49 (0) 431 880-7615  
msp@ / cmot@informatik.uni-kiel.de  
<http://www.informatik.uni-kiel.de/rtsys>

**Contact Person:**  
Prof. Dr. Reinhard von Hanxleden  
Department of Computer Science  
Christian-Albrechts-Universität zu Kiel  
Olshausenstr. 40, 24098 Kiel, Germany  
Phone: +49 (0) 431 880-7281  
Fax: +49 (0) 431 880-7615  
rvh@informatik.uni-kiel.de  
<http://www.informatik.uni-kiel.de/rtsys>

**Further Information:**  
<http://www.informatik.uni-kiel.de/rtsys/kieler>

[1] Hauke Fuhrmann and Reinhard von Hanxleden. Taming Graphical Modeling. In Proceedings of the ACM/IEEE 13th International Conference on Model Driven Engineering Languages and Systems (MoDELS'10), LNCS, Oslo, Norway, 2010. Springer.

[2] Miro Spönemann, Hauke Fuhrmann, Reinhard von Hanxleden, and Petra Mutzel. Port constraints in hierarchical layout of data flow diagrams. In Proceedings of the 17th International Symposium on Graph Drawing (GD'09), LNCS, Chicago, September 2009.

[3] Christian Motika, Hauke Fuhrmann and Reinhard von Hanxleden. Semantics and Execution of Domain Specific Models. In 2nd Workshop Methodische Entwicklung von Modellierungswerkzeugen (MEMWe 2010) at conference INFORMATIK 2010, GI-Edition – Lecture Notes in Informatics (LNI), Leipzig, Germany, 2010.

[4] Reinhard von Hanxleden. SyncCharts in C—a proposal for light-weight, deterministic concurrency. In Proceedings of the International Conference on Embedded Software (EMSOFT'09), Grenoble, France, October 2009.

[5] Miro Spönemann, Hauke Fuhrmann and Reinhard von Hanxleden. Automatic Layout of Data Flow Diagrams in KIELER and Ptolemy II. Technical Report 0814, Christian-Albrechts-Universität zu Kiel, Department of Computer Science, July 2009.