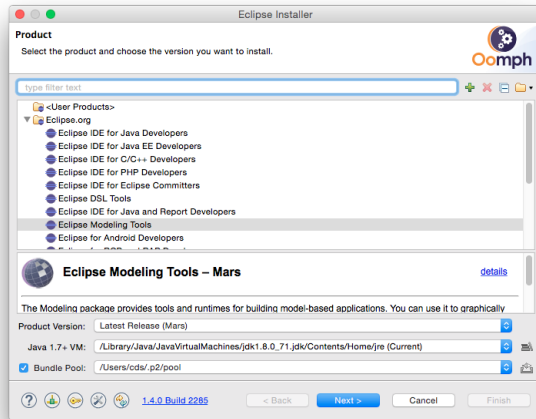


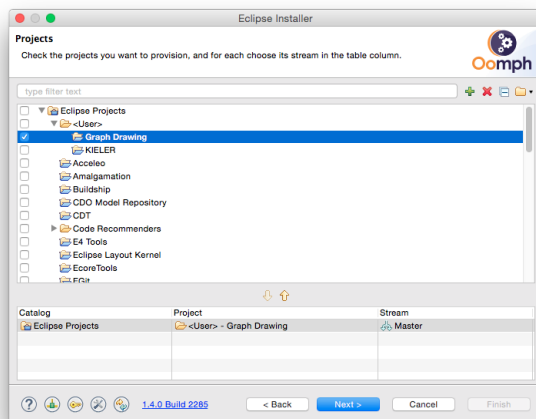
Installing Eclipse for Layout Development

You will first need an Eclipse installation to hack away on layout algorithms with. Since we have a shiny Oomph setup available, this turns out to be comparatively painless:

1. Go to [this site](#) and download the Eclipse Installer for your platform. You will find the links at the bottom of the *Try the Eclipse Installer* box.
2. Start the installer. Click the Hamburger button at the top right corner and select Advanced Mode. Why? Because we're computer scientists, that's why!
3. Select *Eclipse Modelling Tools* from the *Eclipse.org* section and click Next.



4. Next, we need to tell Oomph to get everything ready for layout algorithm development. Download our [Oomph setup file](#), click the Plus button at the top right corner and add the setup file to the Github Projects catalog. Select the new Graph Drawing entry by clicking the check box to its left. This will cause an item to appear in the table at the bottom of the window. Once you're done, click Next.



5. Oomph now asks you to enter some more information. You can usually leave the settings as is, except for the Installation folder name. This will be the directory under which all your Eclipse installations installed with Oomph will appear, each in a separate sub-directory. Select a proper directory of your choice and click Next.